

a dypau group

Architecture, Engineering & Environment
www.adypau-international.com

CENTRAL:

C/ Pintor Sorolla 42 bajo D
46910 Benetusser (Valencia)
SPAIN
Phone/fax: 0034 961 43 19 29
email: correo@adypau.com

INTERIOR DELEGATION:

Avda. Castilla y León, nº18-comercial
09006 Burgos (Burgos)
SPAIN
Phone/fax: 0034 947 24 40 20
email: bursolar@bursolar.es

DIVISION: ARAB MARKET - MAGHREB

Cité 279 LOGEMENTS, Bt 04 N°4
GARIDI 1, KOUBA 16051, ALGER
Mr. Abdelkrim Menasria
Movil Phone: 0034 655 427 114
Phone: 00213 667 900 386

CONCEPT

CONCEPT

IDEA

THE ORIGIN IS AN IDEA OR AN ILLUSION THAT COSTUMER TAKE IT INTENDED CONCIBE AND OUT: PROJECT

- Can you do it....?

NECESSITY

REALITY DOES THE IDEA (PROJECT), IT NEEDS OF A MULTIDISCIPLINARY EQUIPMENT, WITH WIDE EXPERIENCE IN MAKING THE ORIGINAL IDEA VIABLE

- Who will help me...?

TEAM MANAGER

THE ADVISORY TEAM TO DOMINATE THE DIFFERENT PHASES FROM SOIL MANAGEMENT, GOING THROUGH THE IMPLEMENTATION, EXPLOITATION OF A PROPERTY

- They have training and experience?

PROJECT MANAGEMENT

FROM THIS MOMENT THE CLIENT, ONLY THERE MUST WORRY ABOUT TRANSMITTING HIS IDEA (PROJECT) AND THE PERSON ASSIGNED AS PROJECT MANAGER, I KNOW IT ENTRUSTS TO PUT IN MARCH A SERIES OF MECHANISMS IN ORDER THAT THE IDEA OF THE CLIENT IS CARRIED OUT BY THE MAJOR ACCURACY.

- How many are?

SOIL STUDY AND ECONOMIC VIABILITY

FIRST POINT IS TO DEVELOP THE PROJECT.

- Where and how much?

PERFOMANCE DEVELOPMENT

MULTIDISCIPLINARY TEAM THROUGH PROJECT MANAGER, CONSULTANT, JOINT AGREED SUPPORTS AND DIFFERENT OPTIONS FOR CARRYING OUT THE PROJECT ACHIEVEMENT WITH MINIMUM COST AND TIMES.

- When?

OPERATING PHASE

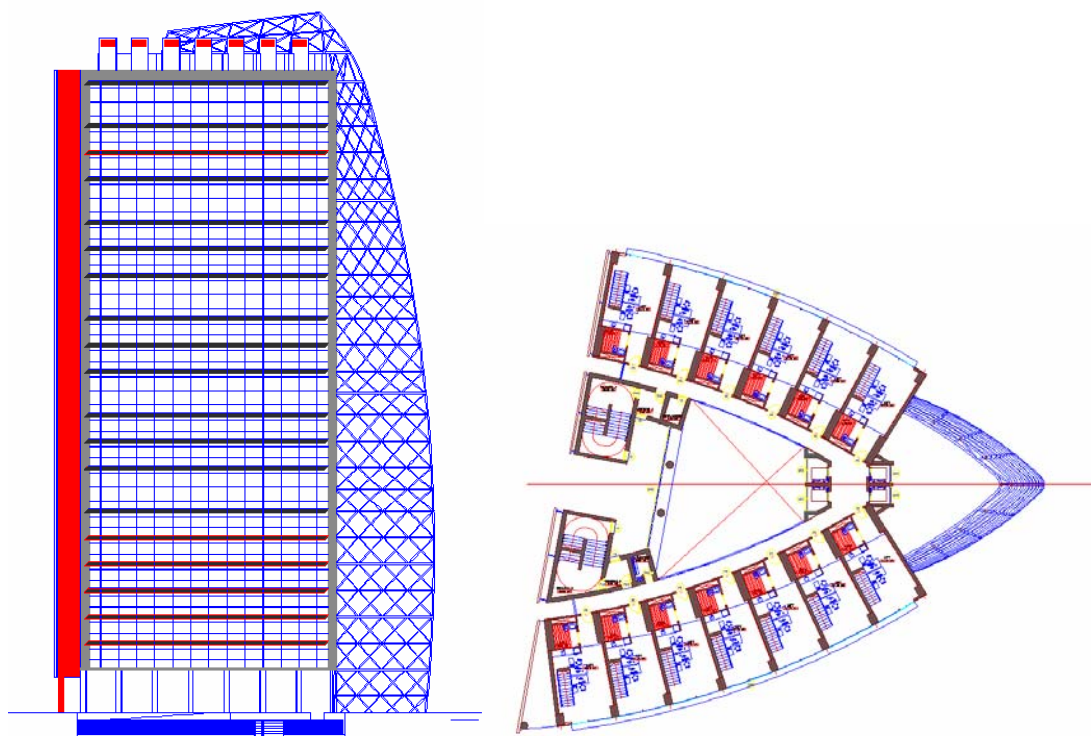
ONCE EXECUTED THE PROJECT, THE CUSTOMER IS STILL TECHNICAL SUPPORT TEAM AS ASSISTANCE IS ALSO INCLUDED IN SUBSEQUENT PHASES OF PERFORMANCE, CUSTOMER ADVISING ON THE WAY TO EXPLOIT THE PROPERTY GET MORE PROFIT.

- And then what....?

THANKS

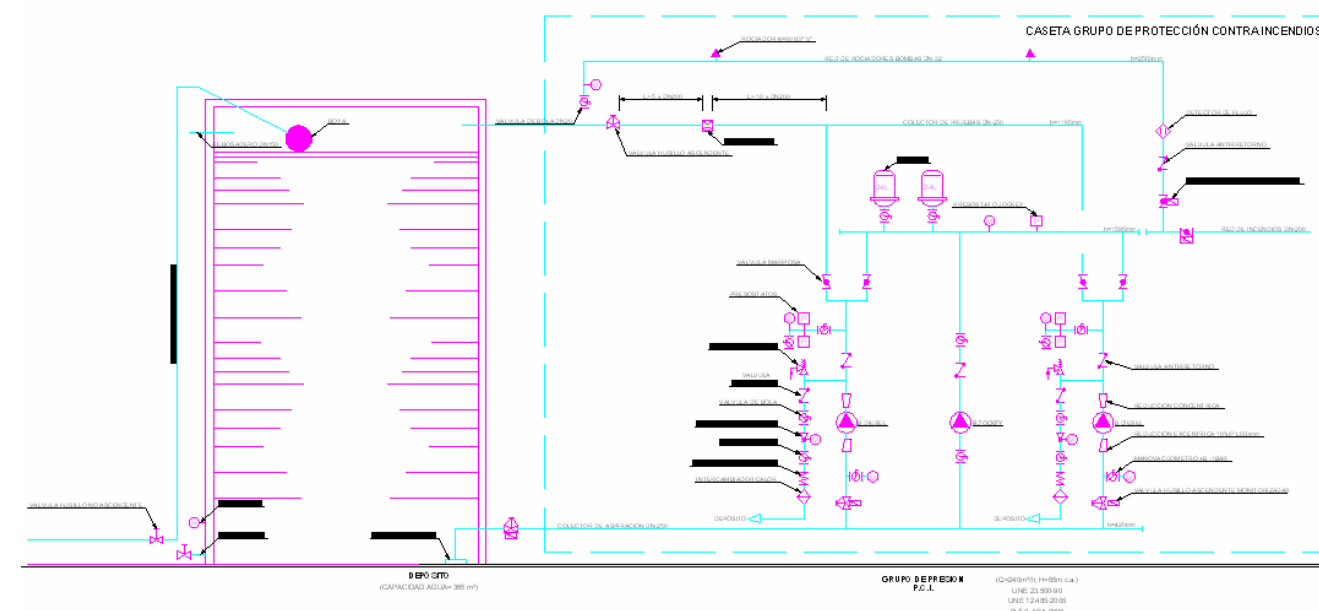
BUSSINES CENTER MN4

Office building of 20 plants of height and one plants basement for garage projected in 2004 on Alfafar (Valencia)



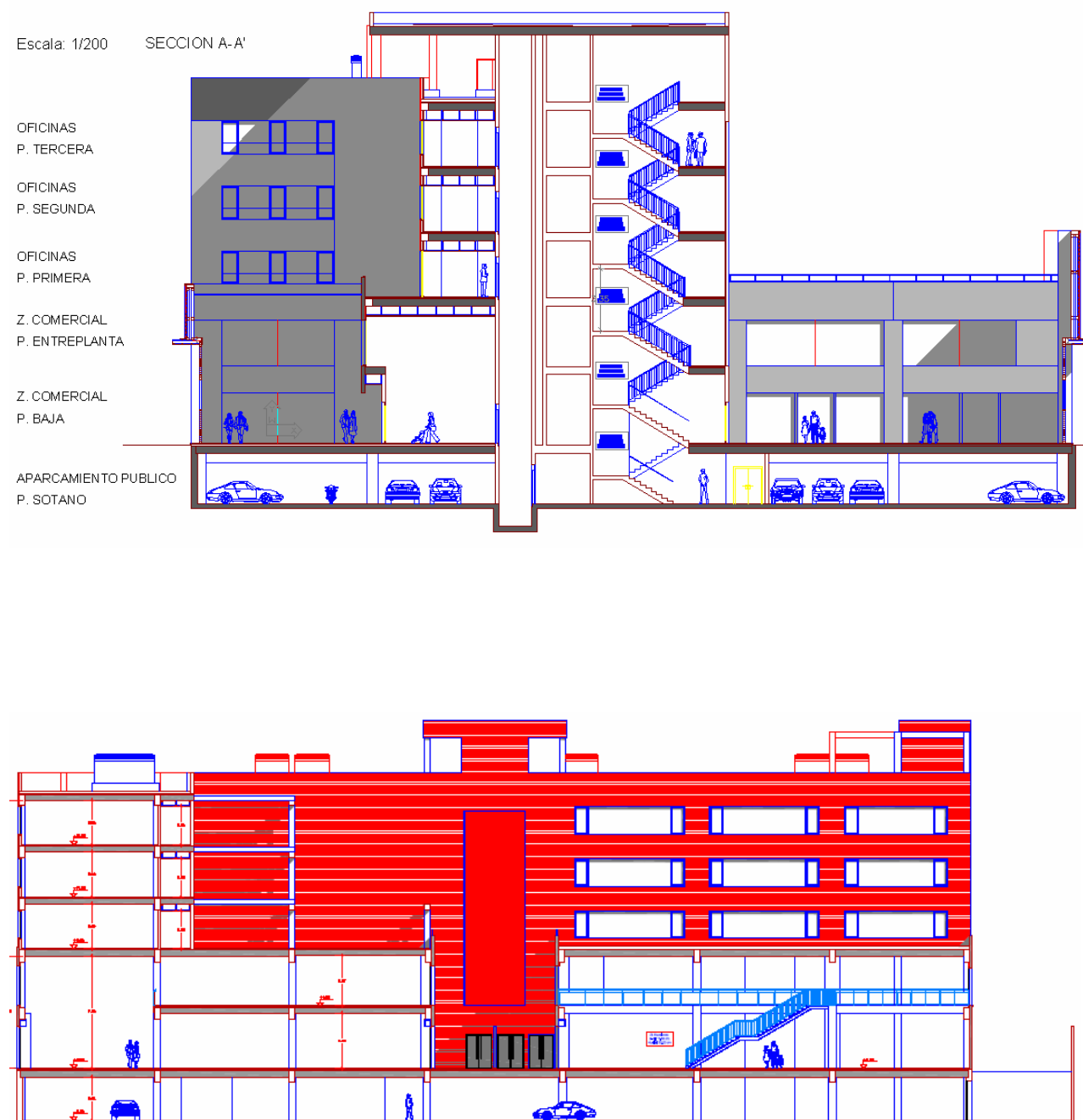
MEDIAMARK & LIDL MALL

Commercial building of 2 plants of height to lodge the shops of Mediamarkt and LIDL in Quart de Poblet (Valencia)



IBES SHOPPING CENTER ALFAFAR

Mall formed by a plant basement for garage, ground floor and mezzanine of commercial use and 3 office plants in the top level, adding a total of 5 plants. Alfafar (Valencia)



VINAROSZ MALL: BRICORAMA

Commercial building product sales of construction, do-it-yourself and accessories for the home formed by 2 plants of height. Vinaroz (Castellón)

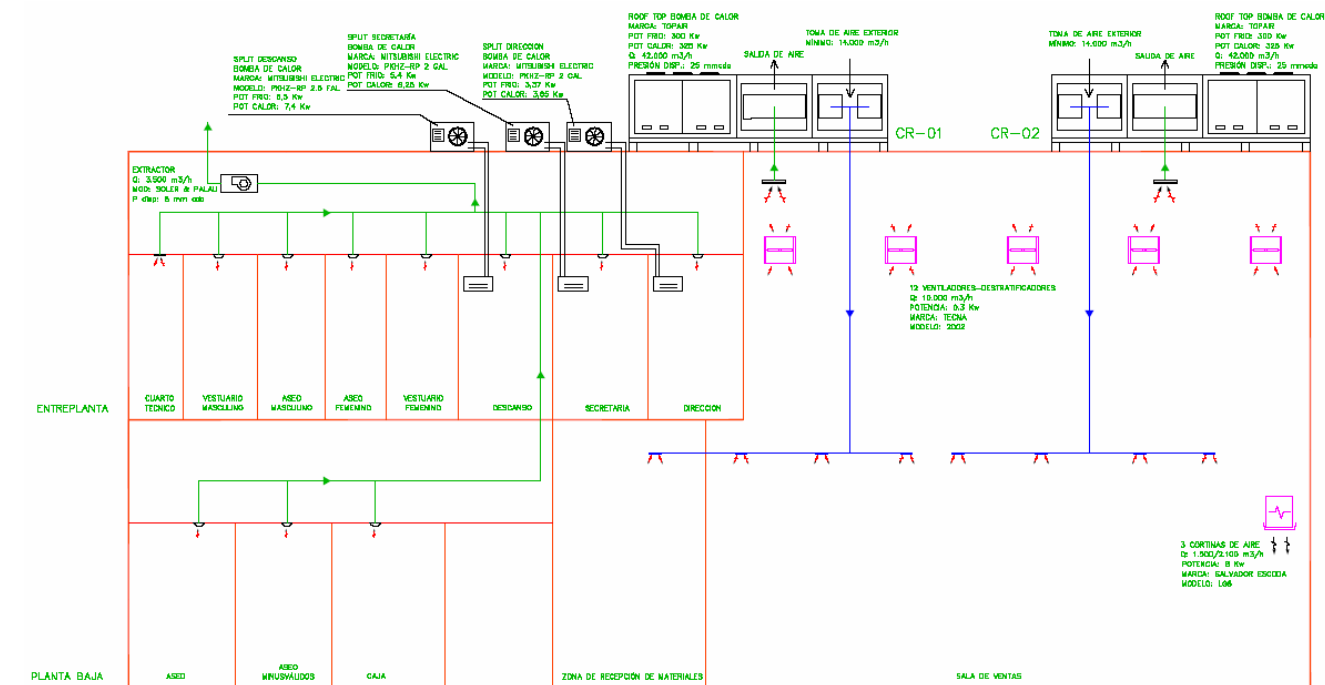
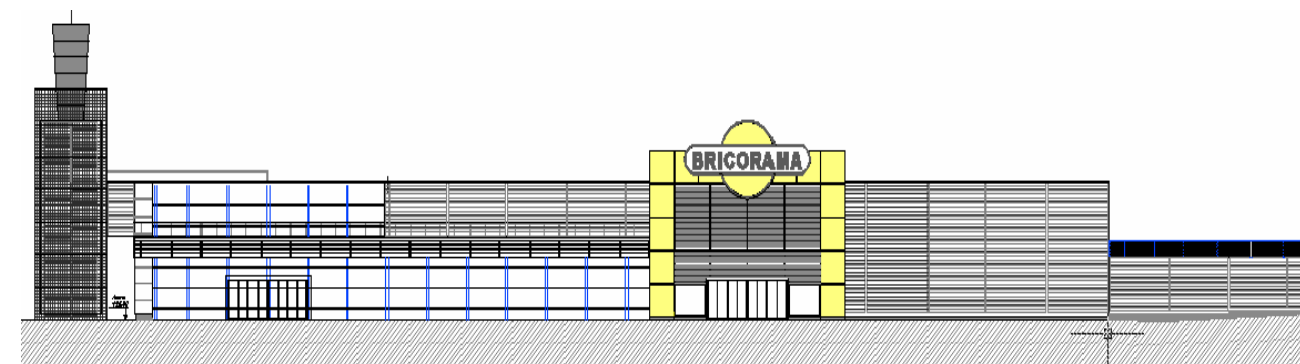
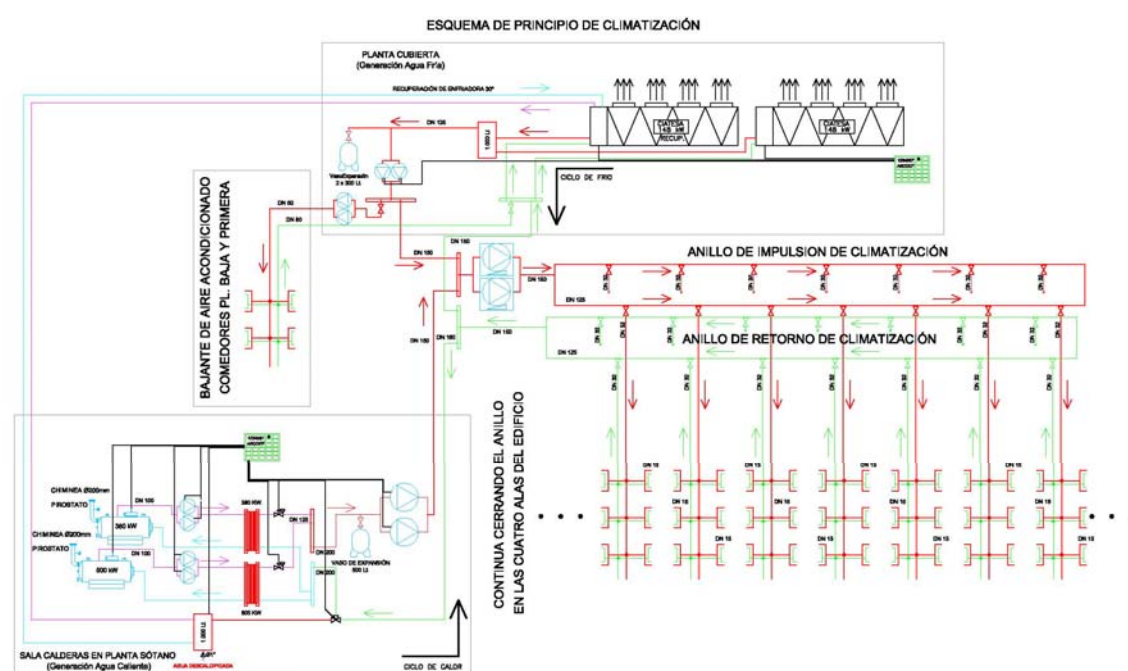


Diagram for air conditioning

HOTEL VORANOVA-PALMA DE MALLORCA

Coast hotel of 3 plants of height with a total of 305 rooms, with 3 lounges of multiple use, 3 swimming pools, SPA and it plants basement for clients' garage. Voranova (Palma)



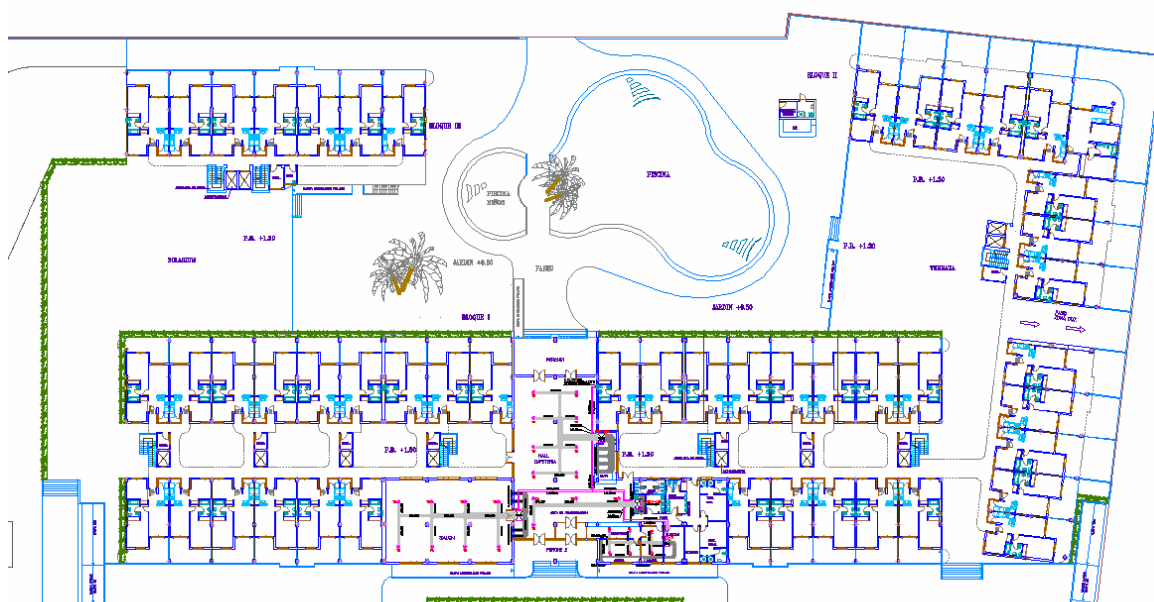
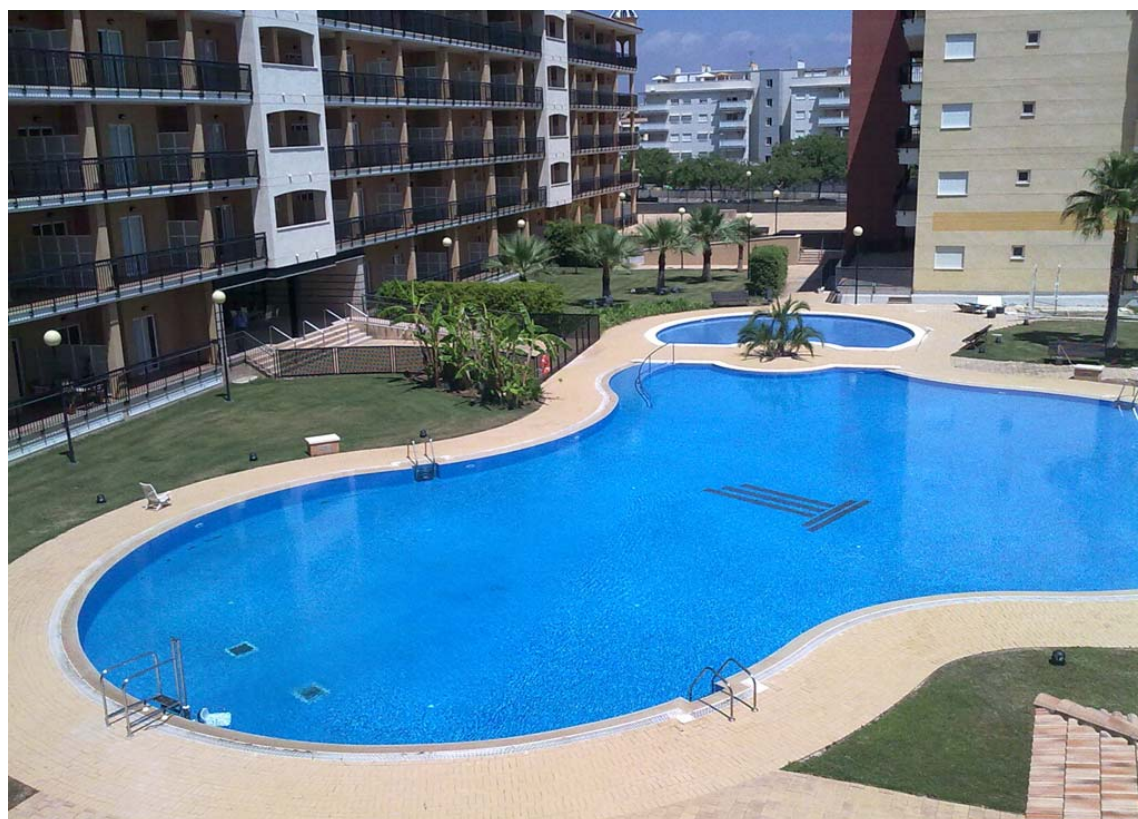
APARTAHOTEL 308 ROOMS IN CANET

Coast hotel of 5 plants of height with a total of 308 rooms, 2 swimming pools and a plant of garage for clients. Berenguer's Canet (Valencia)



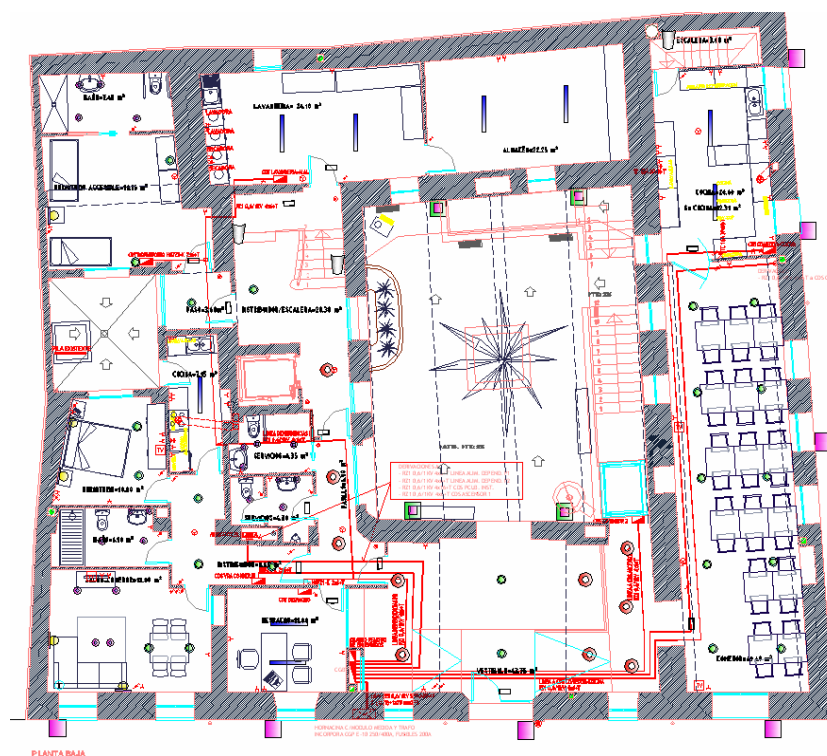
APARTAHOTEL DE 289 ROOMS "EL FARO"

Coast hotel of 5 plants of height with a total of 289 rooms, 2 swimming pools and a plant of garage for clients.
Berenguer's Canet (Valencia)



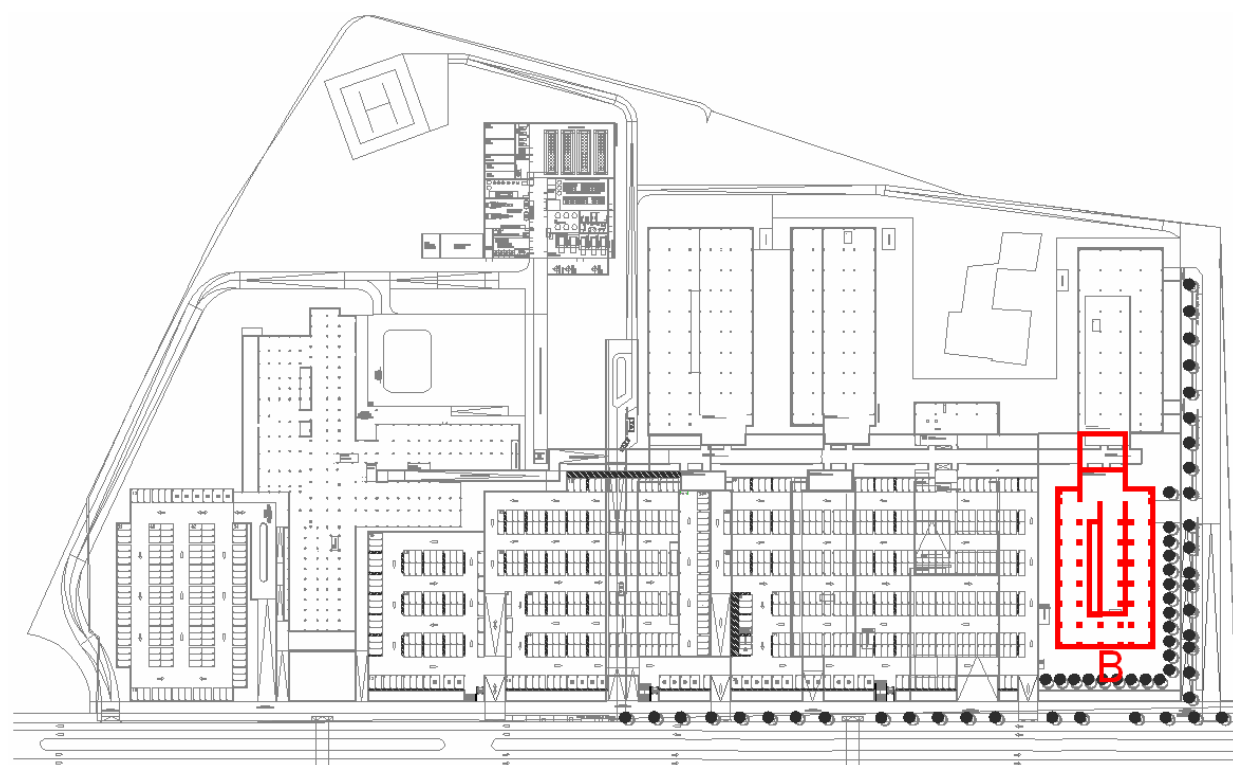
RURAL HOTEL "CASA CIGRONER" IN XÀTIVA

Hotel of 40 rooms of 3 plants of height + covered ground floor dedicated to facilities + plant basement dedicated to cafeteria.
Xàtiva (Valencia)



HOSPITAL "CAN MISSES" IN IBIZA

Hospital "Can't MISSES". It has 45 units of consultations and a capacity of up to 500 people. Available emergency services and observation. Ibiza.



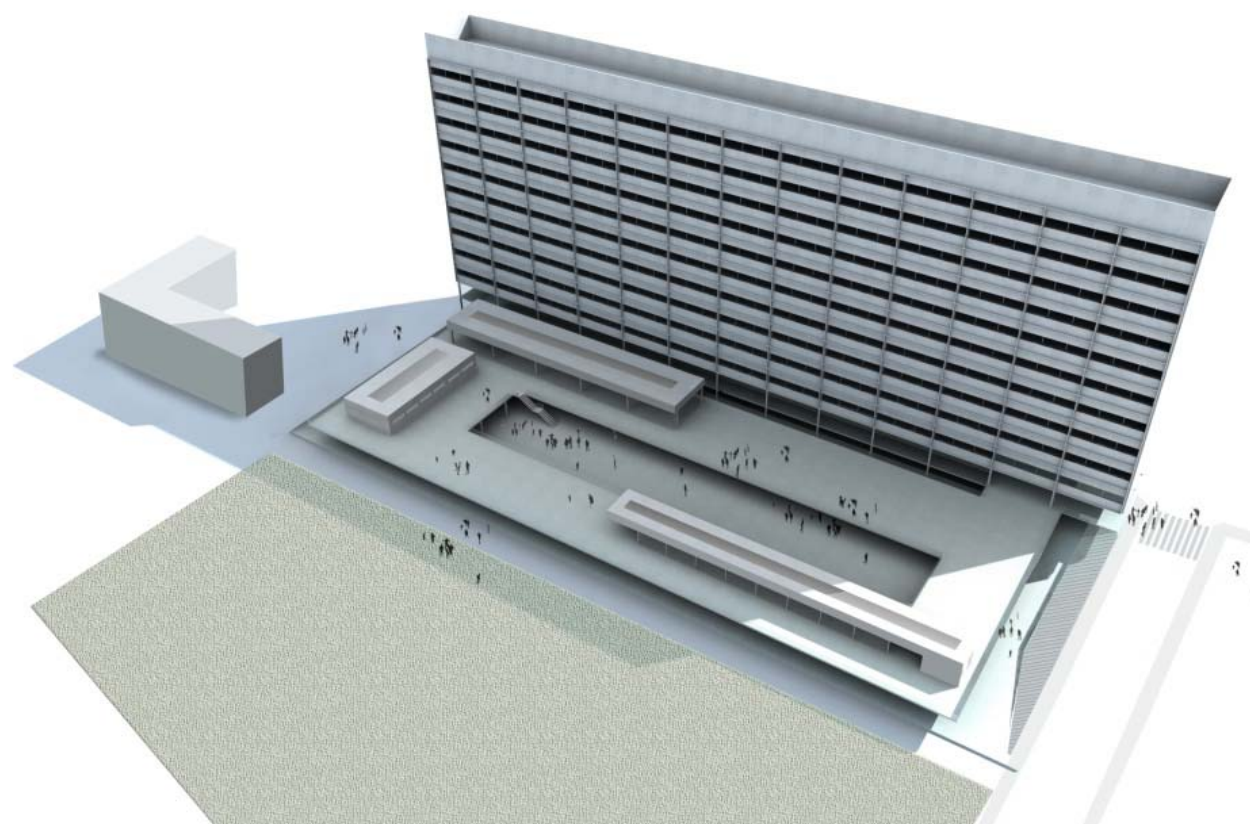
SENIOR RESIDENCE IN CANET DE BERENGUER

The complex has one area of 5,000 m2. Has 2 floors with a total of 60 double rooms, common areas, gardens, parking, rooms cures, rehabilitation, etc. Canet de Berenguer (Valencia)



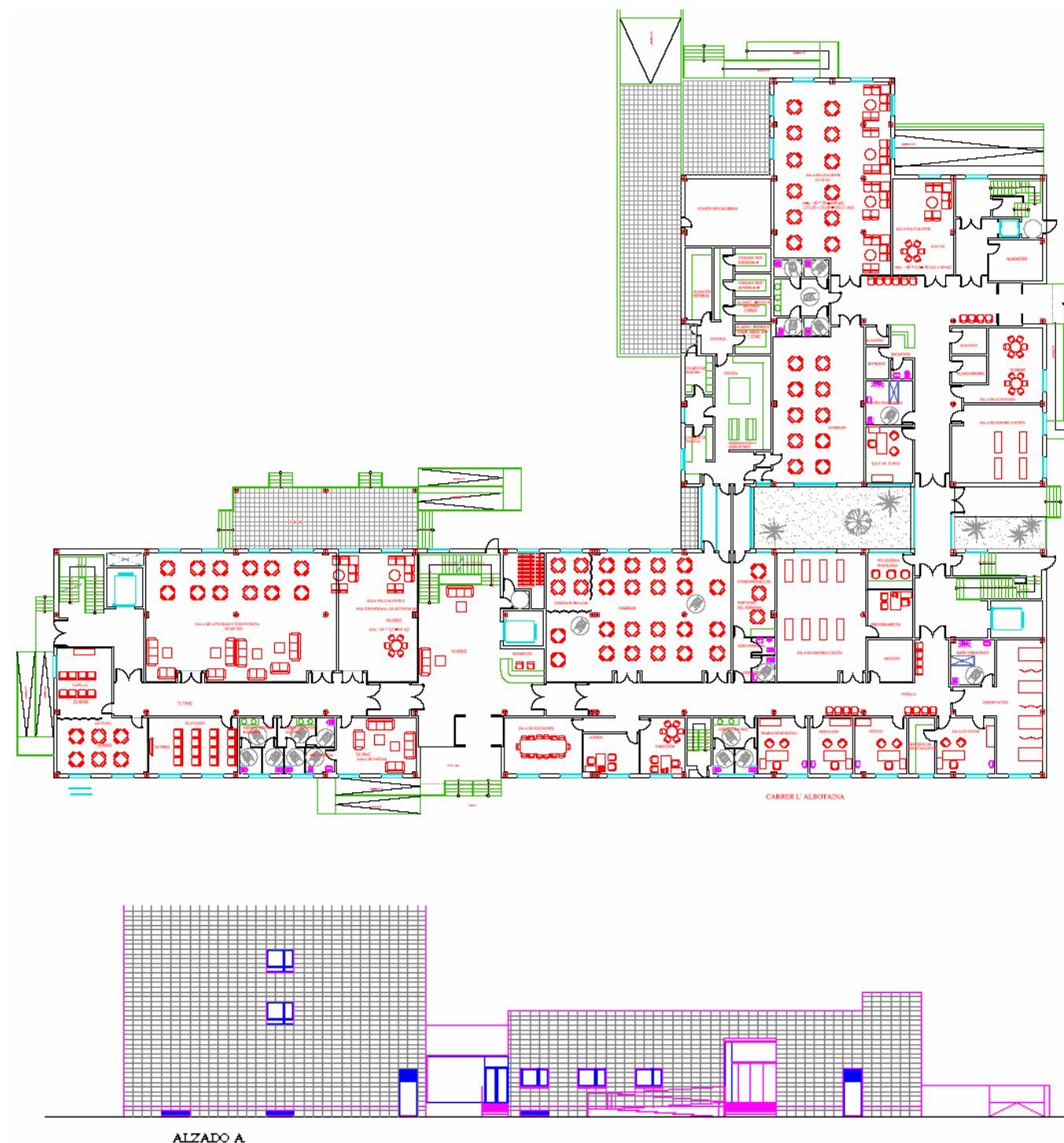
RESEARCH CENTER "BIOPOLO" VALENCIA

Hospital BIOPOLO (the faith) has a height of 10 plants and two floors of basement (room facilities and parking) and a capacity of up to 3.000 people. Valencia.



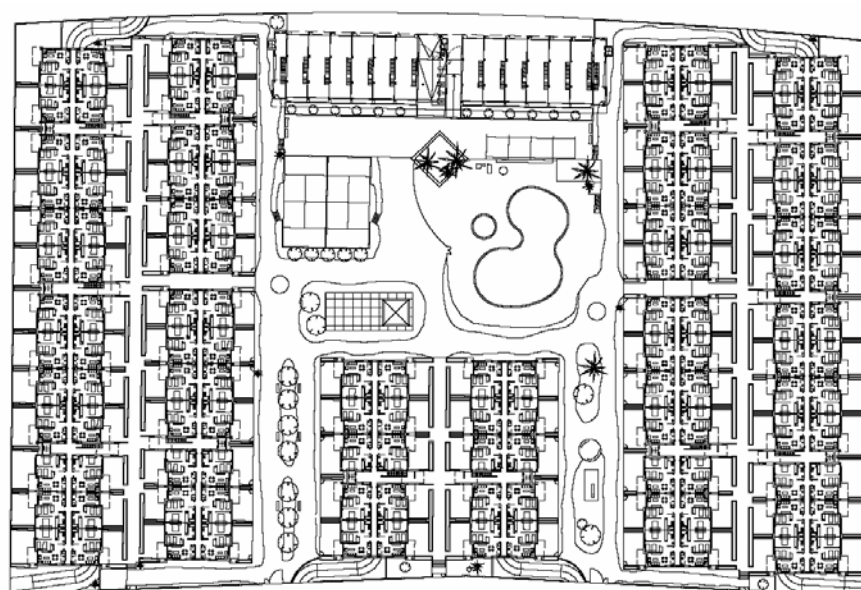
SENIOR RESIDENCE IN ALGEMESI (VALENCIA)

The Residence of Third Age possesses a surface of 6.840 m². It Possesses 6 units of consultations, 100 beds and an appraisal of 800 persons. He has services of rehabilitation, geriatrics, priests and dining room - kitchen. Algemesi (Valencia)



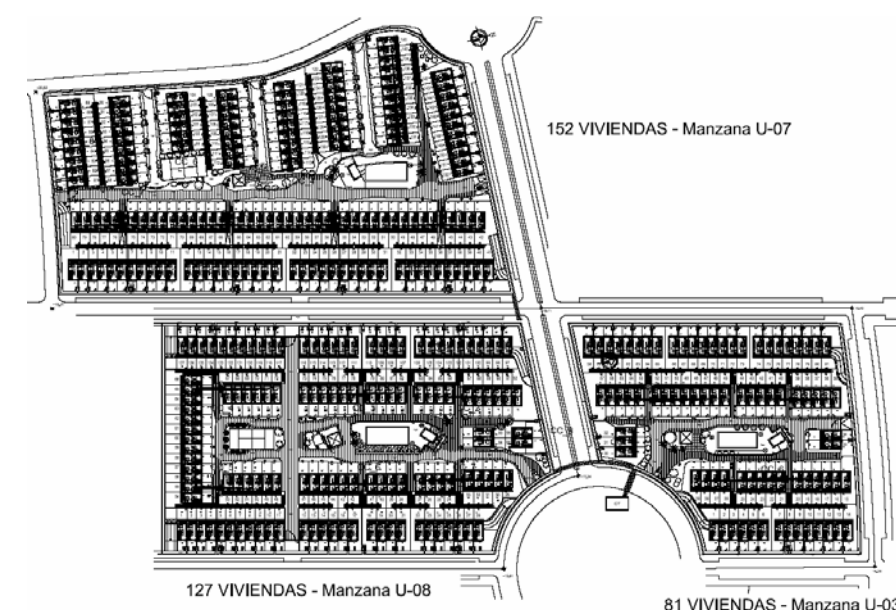
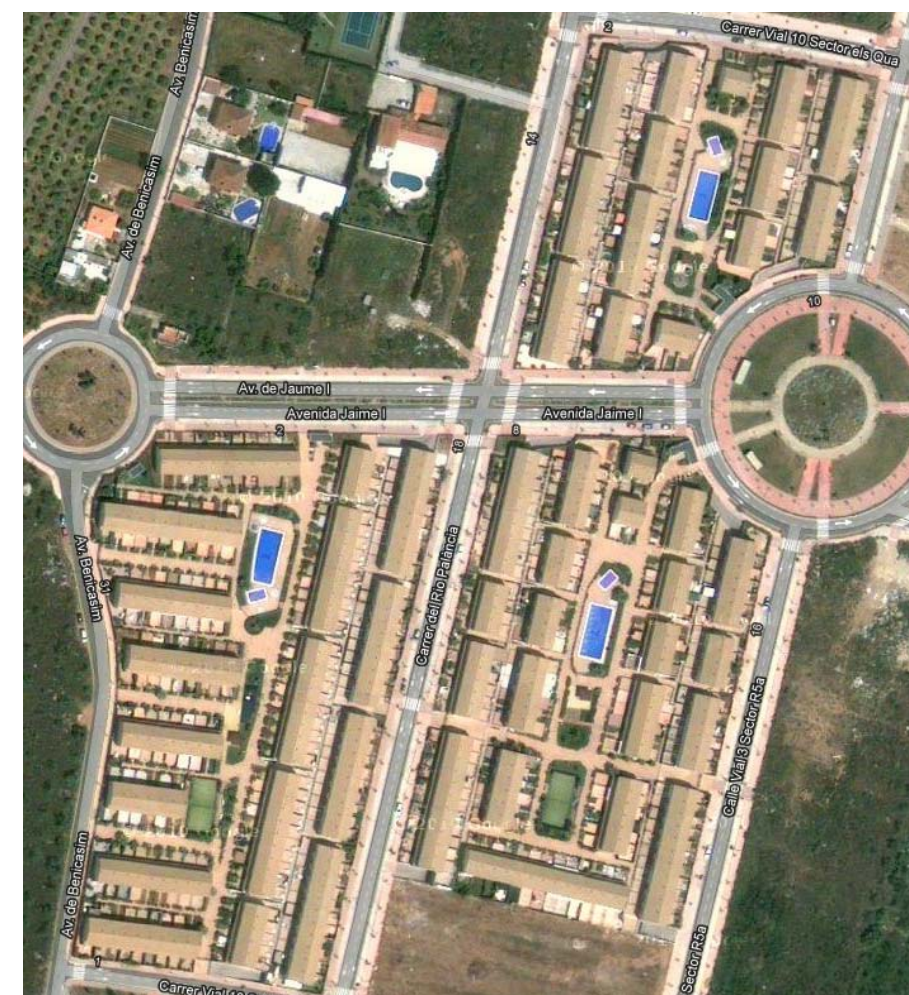
524 HOUSINGS. ALMENARA BEACH (CASTELLÓN)

The building consists of 7 blocks of 524 housings, with plant basement destined for the parking. He has sports tracks and swimming poo. Beach Almenara (Castellón)



360 HOUSINGS. BEACH OROPESA DEL MAR. (CASTELLON)

The building consists of 3 blocks of 360 housings, and garages. He has sports tracks and swimming pool. Oropesa del Mar (Castellón)



44 HOUSINGS IN BURGOS

The building consists of 6 floor of 44 housings, with plant basement destined for the parkin. Burgos.



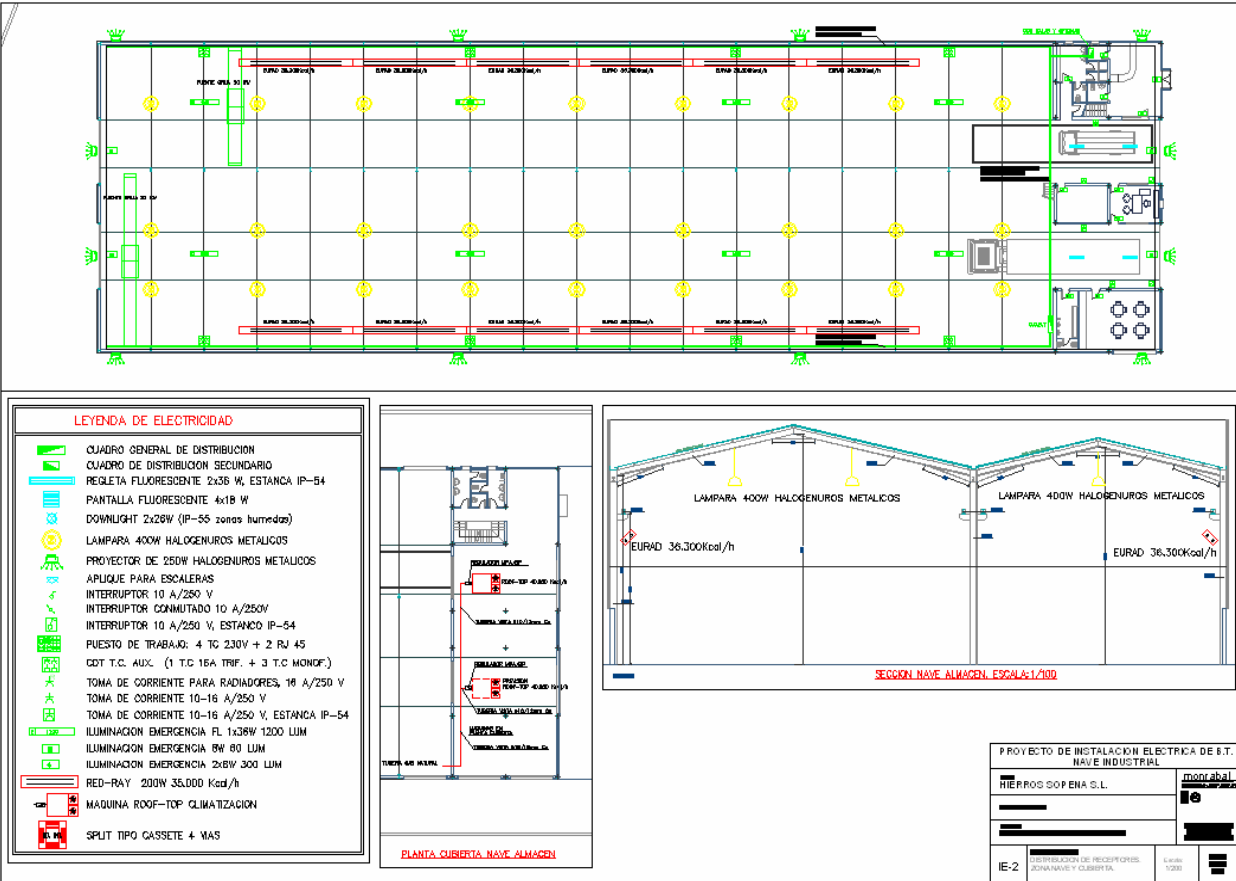
420 HOUSINGS. ALMENARA BEACH. CANET DE BERENGUER

The building consists of 4 blocks of 360 housings, with plant basement destined for the parking. He has sports tracks and swimming pool. Beach Almenara (Castellón)



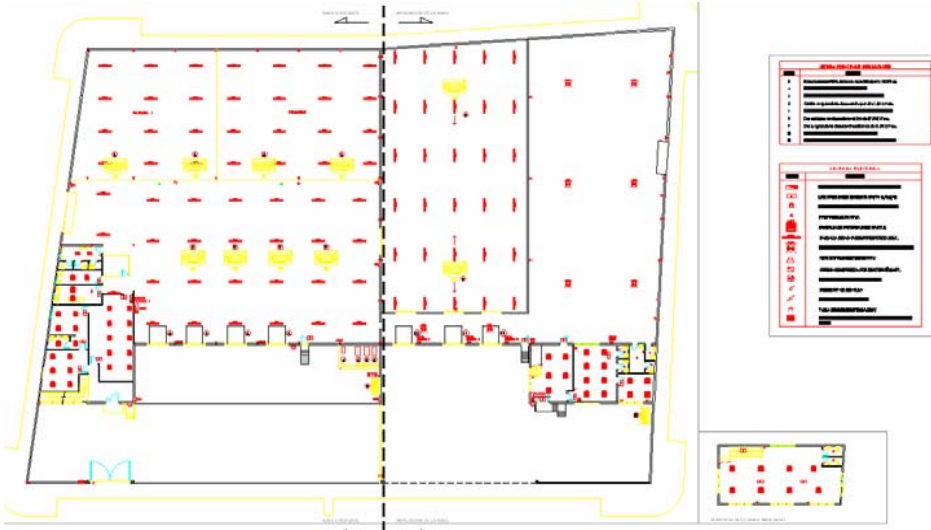
INDUSTRIAL PLANT "HIERROS SOPENA"

Industrial plant of 2.790 m² for the manufacture and transformation of metallic pieces.

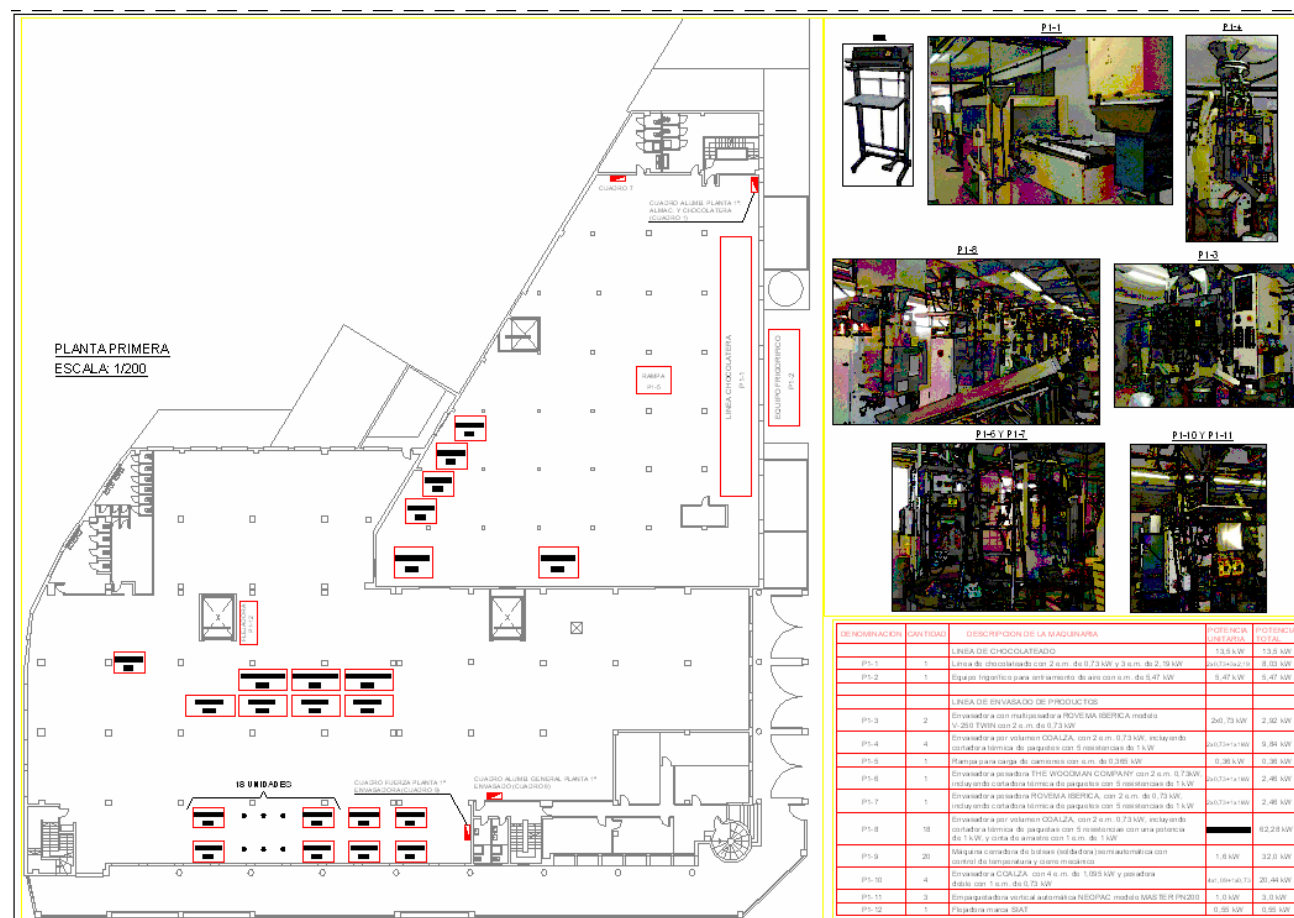


INDUSTRIAL PLANT "SERVICOM"

Industrial plant with a surface of 3.615 m², whose activity is that of store, confection, distribution and agency of transport of products horticultural.



Industrial plant of 6.840 m² for the production and packaging of food products.



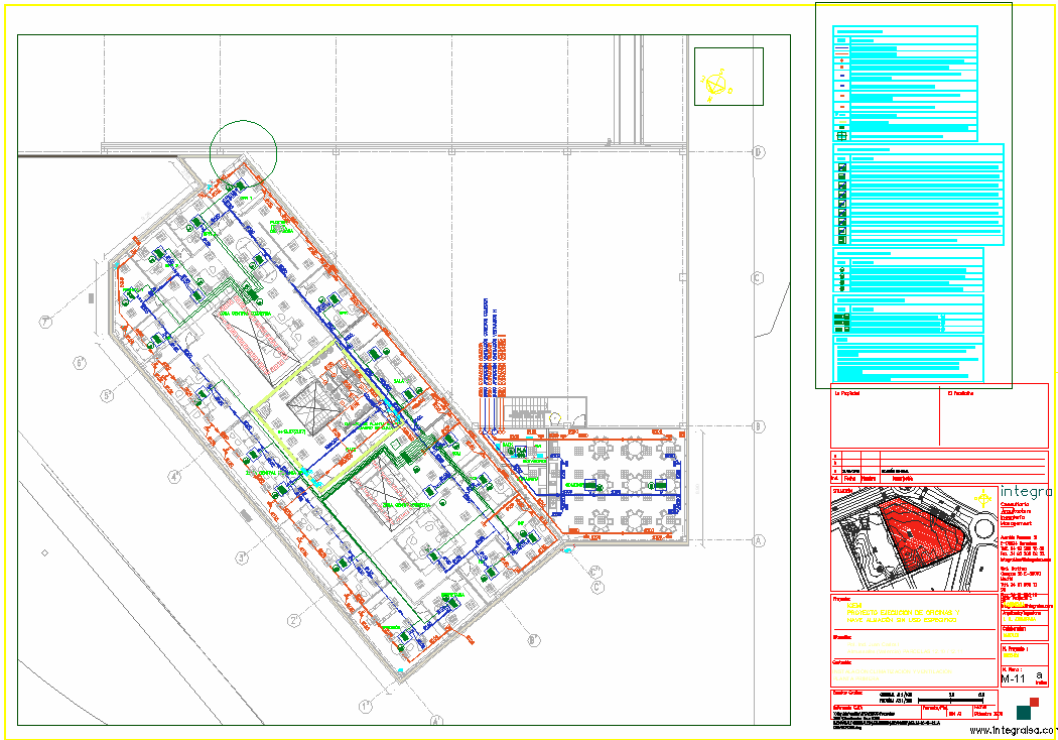
LOGISTIC CENTER "GADISA"

Logistic center of 14.000 m², as center of logistic operations for the distribution of products of supply.



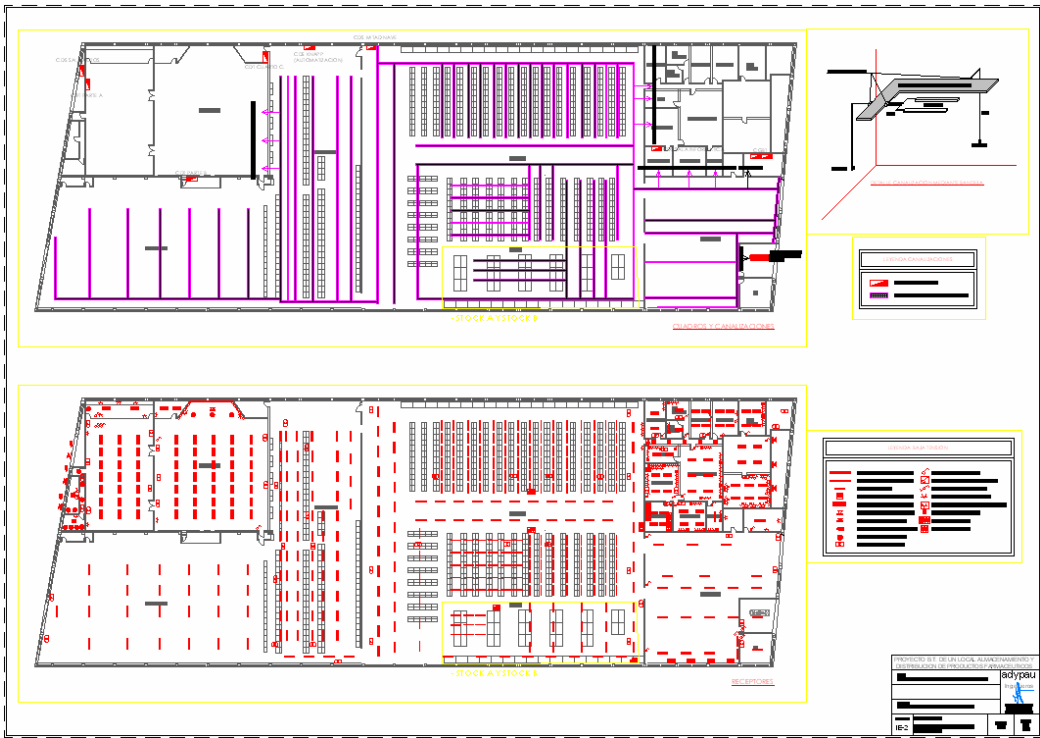
INDUSTRIAL PLANT "ICEMI"

Industrial plant of trial and office with a surface of 1.970 m² for a company of industrial automation, where there are made systems of control and automation.



INDUSTRIAL PLANT "FEDERACION FARMACEUTICA S.COOP.C.L."

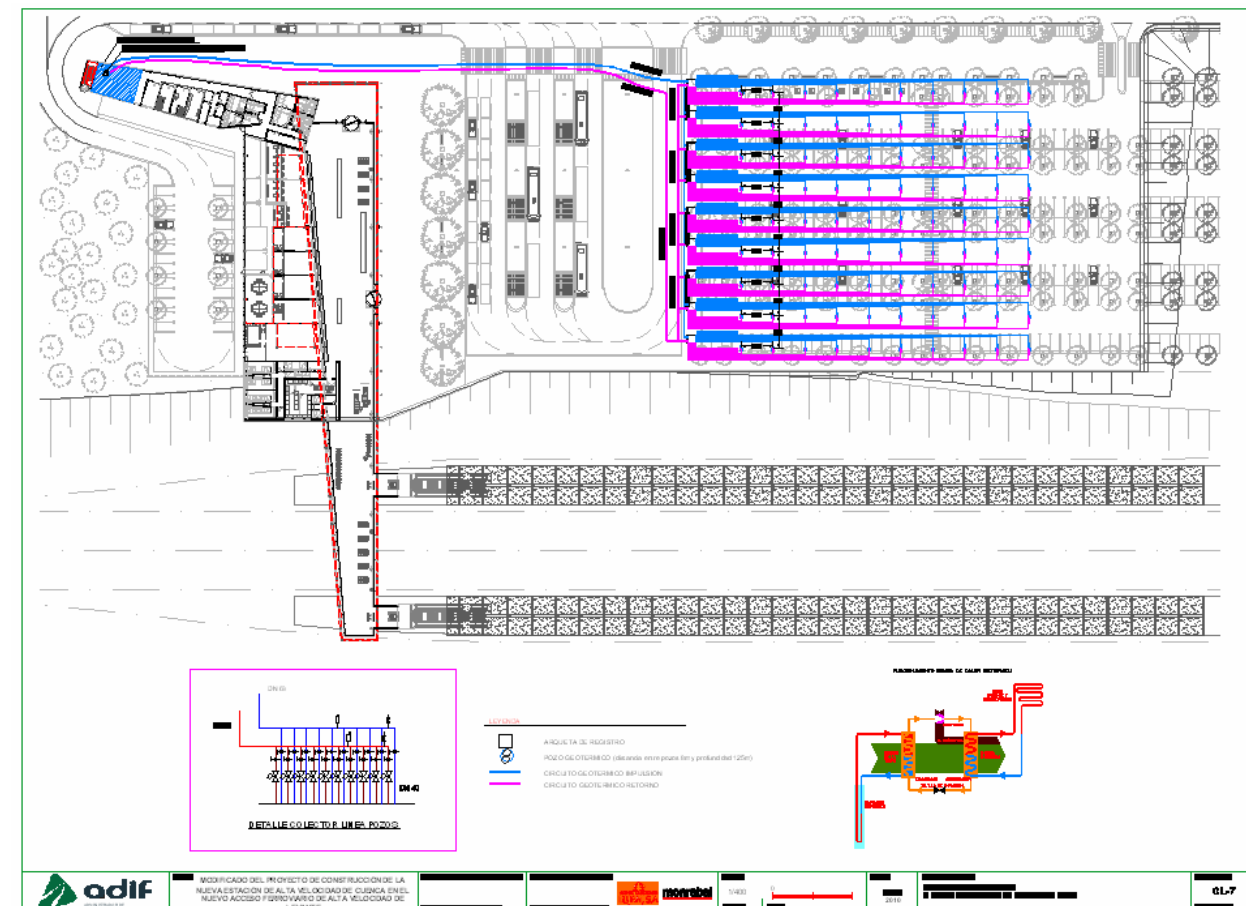
Industrial plant of 5.160 m² for the storage and distribution of pharmaceutical products.



HIGH TRAIN STATION SPEED GIVES CUENCA

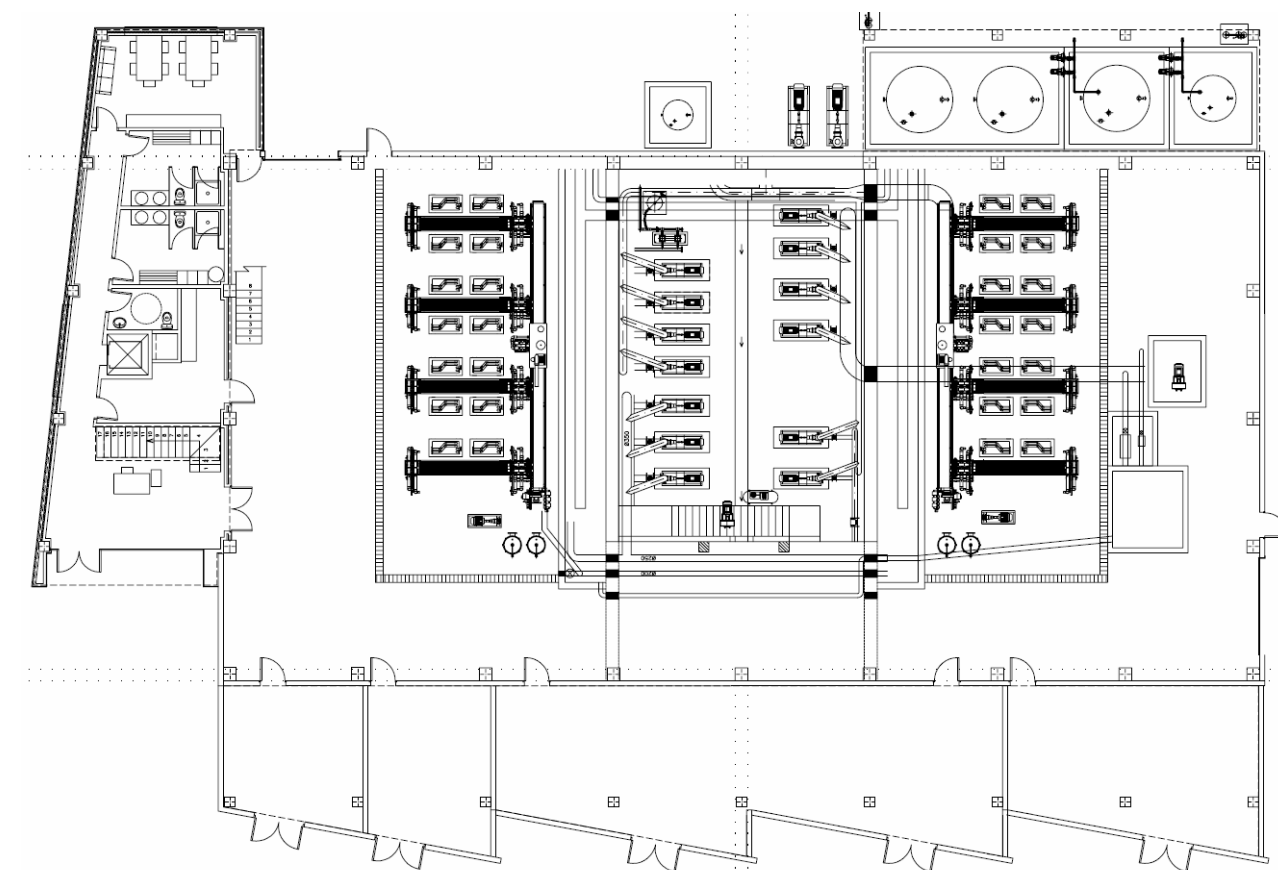


Travelers' station of Alta Velocidad's line in the city of Cuenca.



INDUSTRIAL PLANT AND GIVE PUMPING IN L'ELIANA

Station of elimination of water nitrates subterranean and station of pumping.



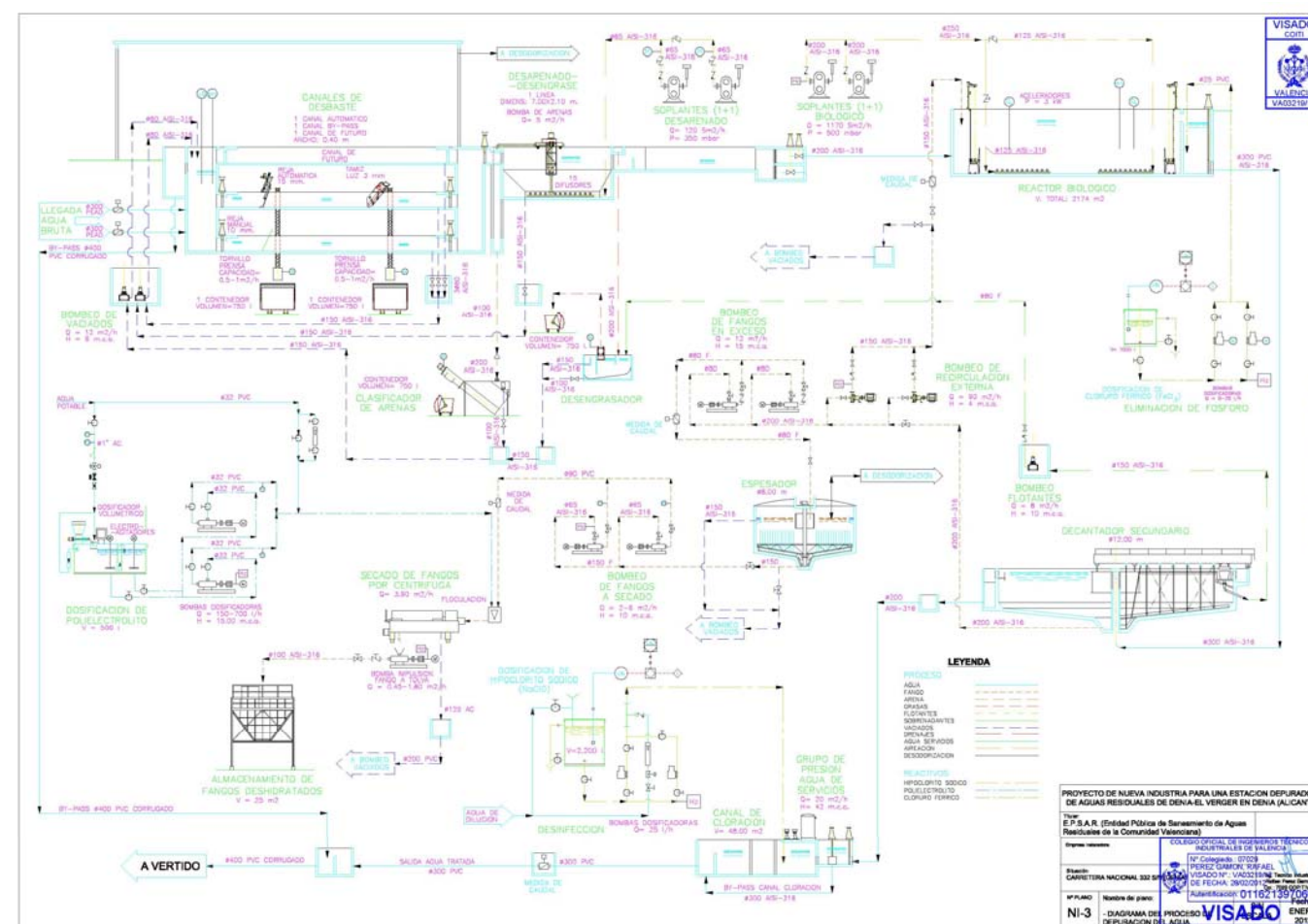
CENTER OF CONTROL I DEAL RAILROAD 24H VALENCIA

Edificio de control de seguridad y del trafico ferroviario del administrador de infraestructuras ADIF.



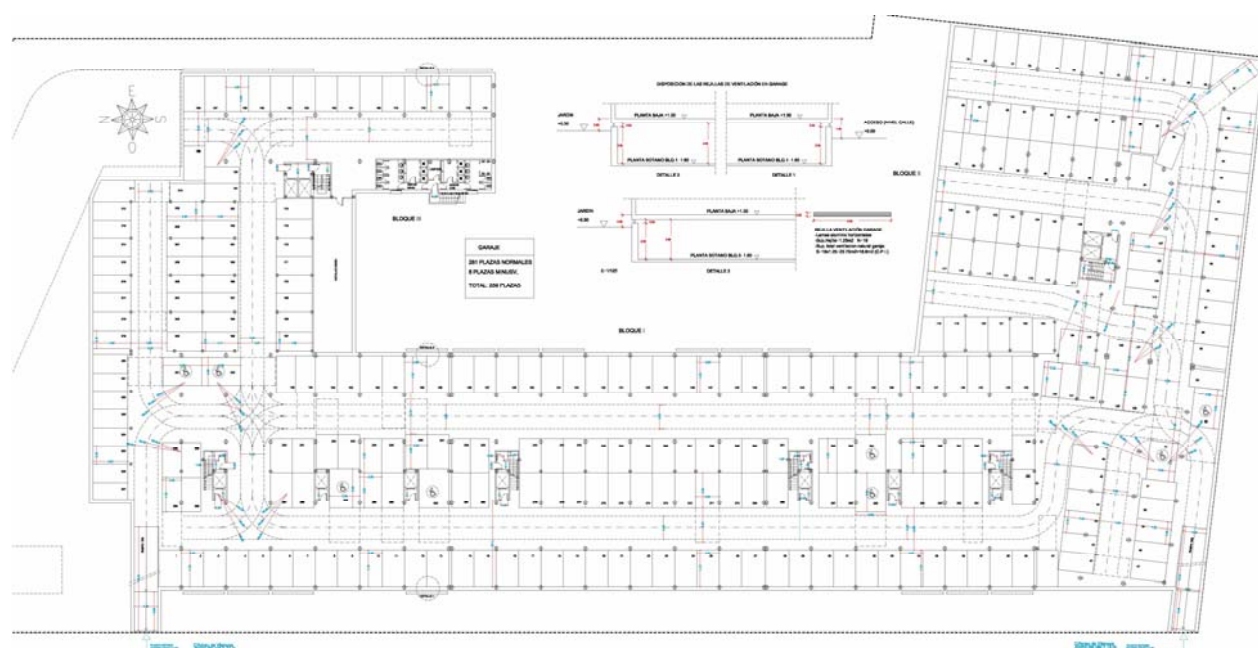
PLANTS FILTER SYSTEM OF DENIA'S WASTE WATER

Station filter system of waste water of Denia's metropolitan area (Alicante).



PUBLIC PARKING IN VIGO

Administration and management of public parking of management deprived of 450 parking lots.



RESIDENTIAL TAMARAGUA 891 ONE-FAMILY HOUSINGS IN LANZAROTE (ISLAS CANARIAS)

Residential complex of tourist use in paradisiac island.

Residencial Tamaragua (zona Este)



Residencial Tamaragua (zona Oeste)



MANAGEMENT OF RESIDENCE PLAZA REAL IN GIJON

Administration, management of 171 squares for residents and 20 squares of Center by day, treatments of rehabilitaci3n and SPA.



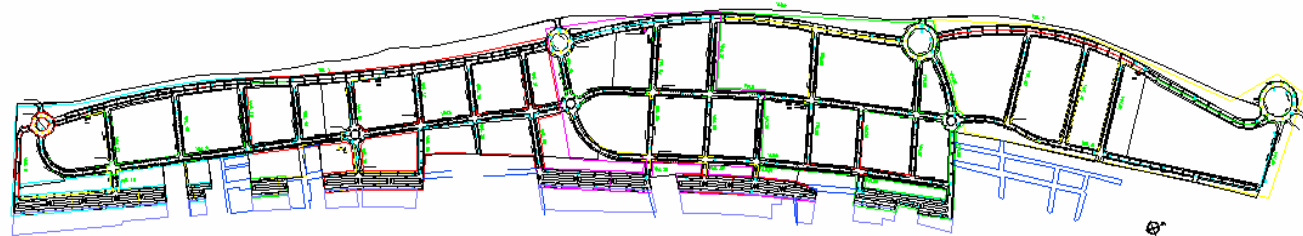
HOSPITAL RECOLETAS CASTILLA Y LE3N

Extension of the Regional Hospital of Burgos, 52 single rooms, eight operating rooms, an area of resuscitation and services of diagnosis, between other services



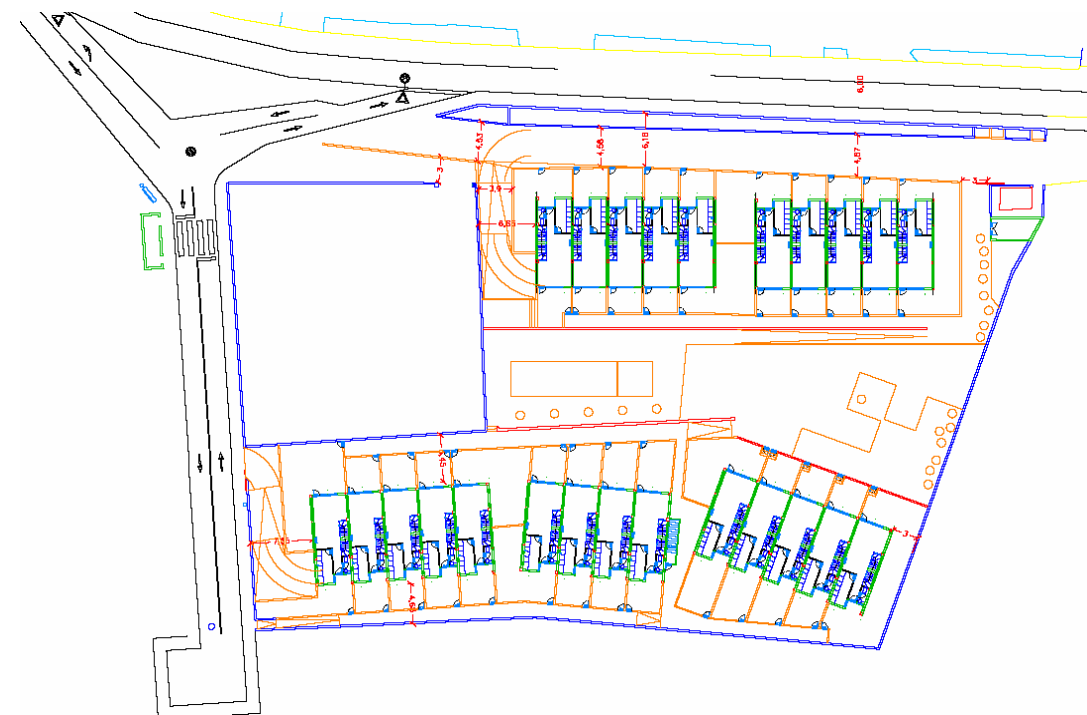
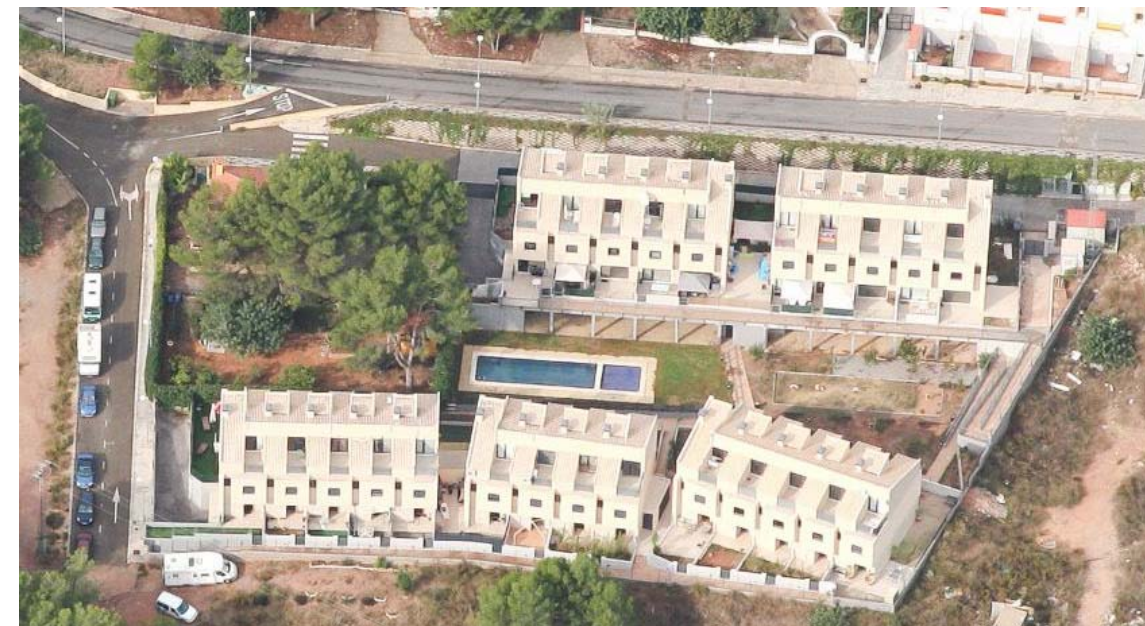
ALMENARA BEACH ESTATE SECTOR 3500 FOR HOUSING. ALMENARA (CASTELLÓN)

35,000 kW electric Infrastructure
3 CT's of Cast
11 CT's transformation 2x800 kVA's c / u
30,000 m underground MT 20 kV Network
135,000 underground BT Network
telephony Infrastructure
Red rainwater and sewage
Streetlights



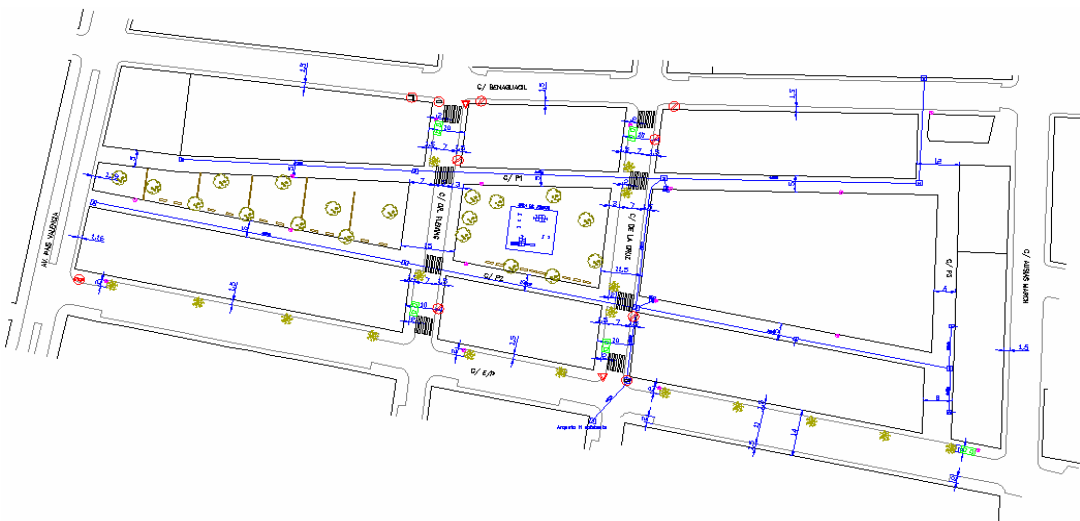
ESTATE C/ONDA AND ADJACENT. GILET (VALENCIA)

Infrastructure MT - CT
BT Infrastructure
Water distribution network
telephony Infrastructure
Red rainwater and sewage
Streetlights



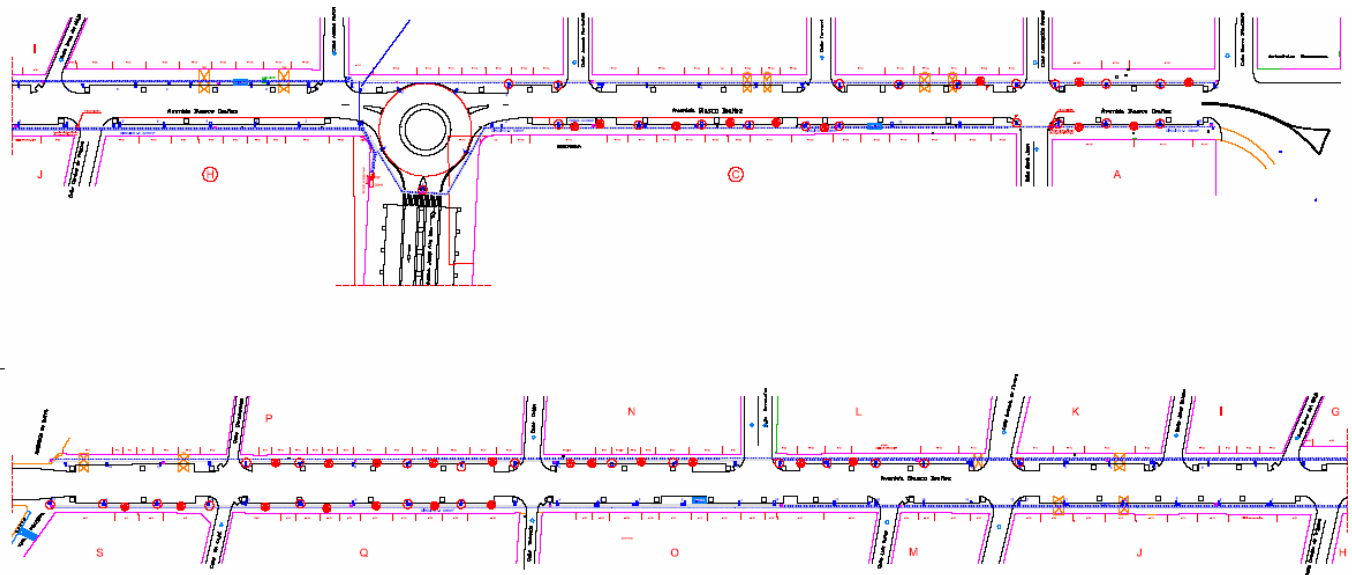
ESTATE SECTOR-C. EAST END BETERA (VALENCIA)

MT-BT Infrastructure, 3500 kW
 3 CT's IB 1400 kW
 telephony Infrastructure
 Red rainwater and sewage
 Streetlights



LIGHTING FACILITIES LOCATION OF MASSANASSA (VALENCIA)

Instalación alumbrado público Av. Blasco Ibáñez,
 potencia instalada de 40 kW.



CITY SPORTS MASSANASSA (VALENCIA)

Installation of Air conditioning, ventilation, electrical, plumbing, fire facilities.

The sports available:

- Tracks polideportivos discovered
- Outdoor pool
- Football Field
- Pediments and tennis courts
- Paddle Tennis
- Pavilion tracks covered
- Changing pavilions
- Pavilions auxiliary medical center, dining room - coffee shop.



RURAL COMPLEX BARRAIX in ESTIVELLA (VALENCIA)

- HVAC Installation: 250,000 frig / h
- Electrical Installation LV 250 KW
- HEATING-ACS Installation
- Tank Installation and LPG distribution network
- Installing fire
- Plumbing Installation



MUNICIPAL POOL "IFACH" IN CALPE

Large swimming pool. HVAC Installations, plumbing, electrical and solar gain.

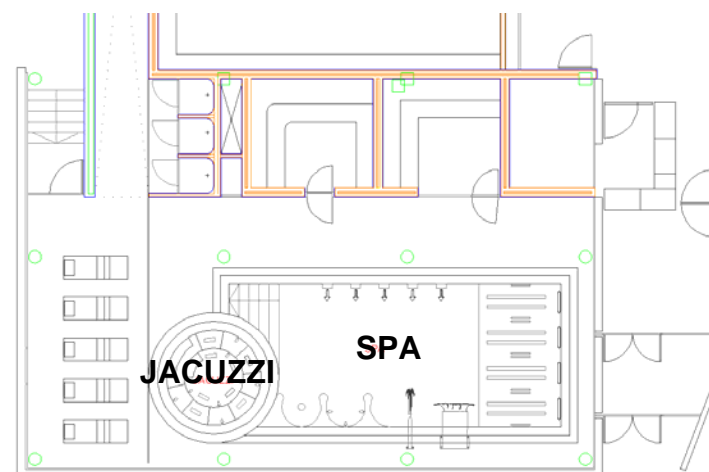
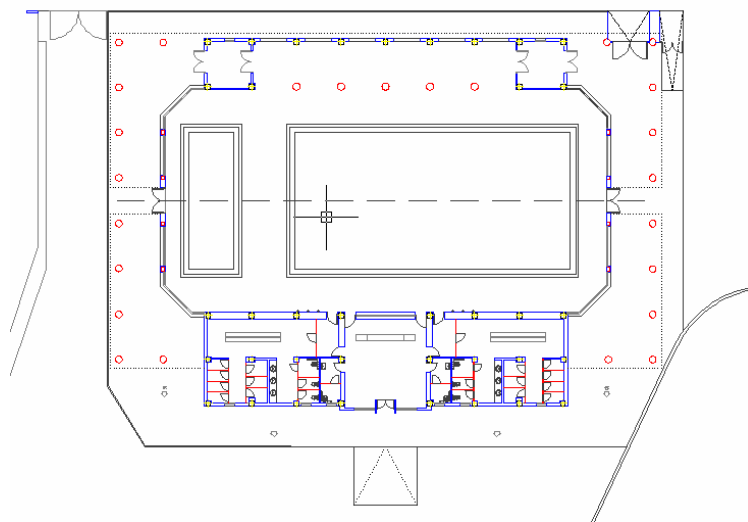
Pool Características

Pool type: indoor heated public use

Pleasure Glass: 340 m²

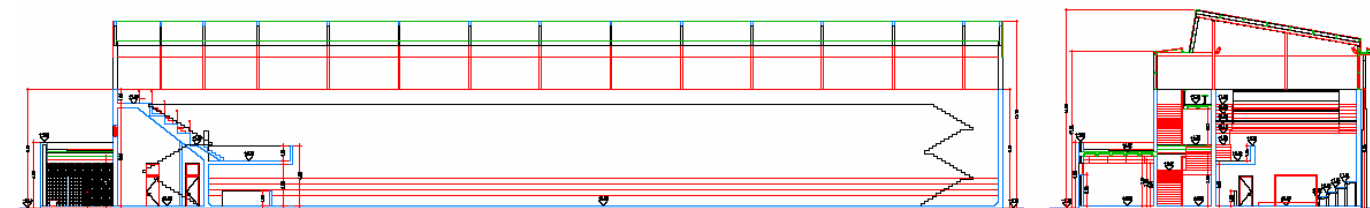
Spa and Jacuzzi: 48 m²

Capacity glass rec.: 170 people

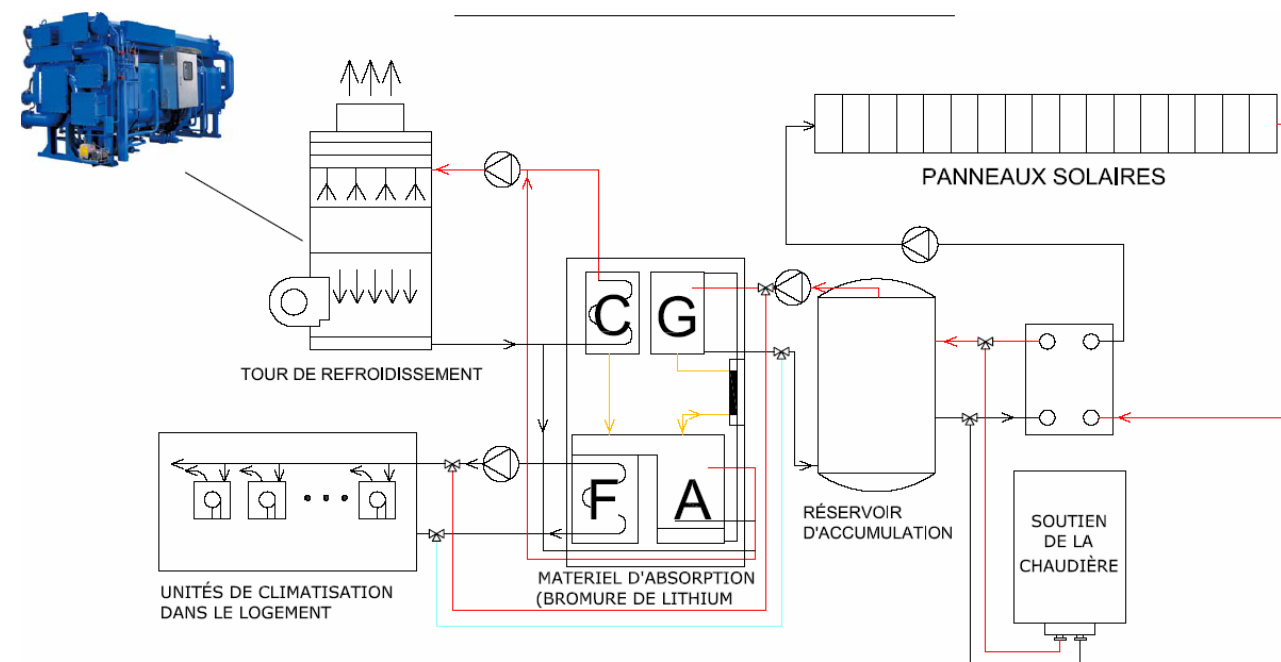


COVERED TRINQUET IN CHILCHES

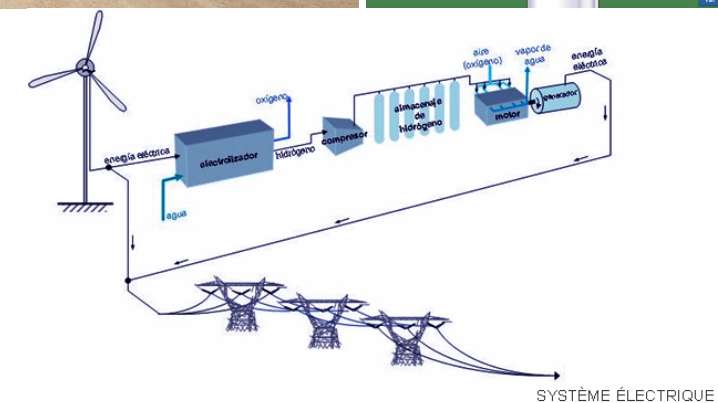
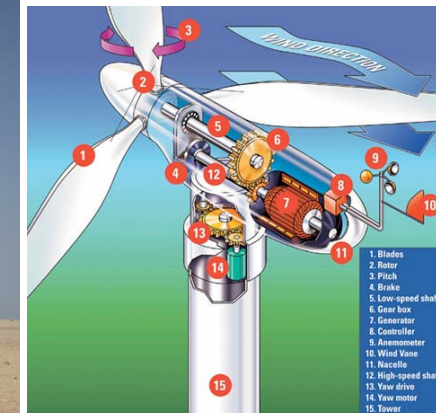
Installation of heating, sanitary hot water, electricity and plumbing.



CENTRAL COGENERATION



WIND FIELD



SOLAR FIELD



ADYPAU GROUP, It is the group of 3 companies to give an integral response to the needs of the client.

The insole possesses architects, civil engineers, industrial engineers, technical personnel of facilities, draughtsmen and administrative officers. Likewise, it possesses an economic - legal division formed by technical economists and attorneys.

The annual volume of works realized and managed in the last years has been:

- Year 2010: 240 Million Euros
- Year 2011: 275 Million Euros
- Year 2012: 350 Million Euros

Being the maximum volume reached of 495 million Euros in previous exercises.